

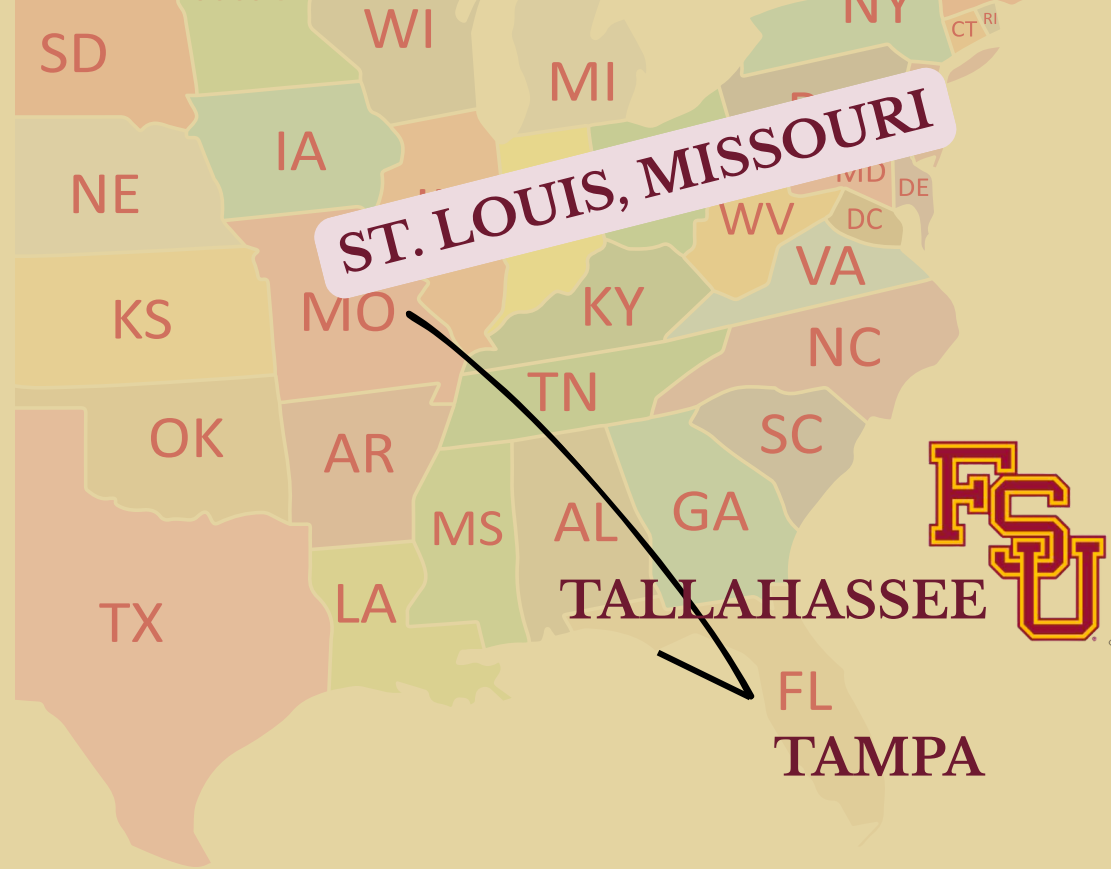
**Beyond the Bay: Community  
Perspectives on the Oyster  
Decline and Franklin County's  
Future**

**FSU**  
**IDEA GRANTS  
& HONORS IN  
THE MAJOR**

**Morgan A. Krause**  
FSU Environmental Science & Policy

A  
B  
O  
U  
T

M  
E!

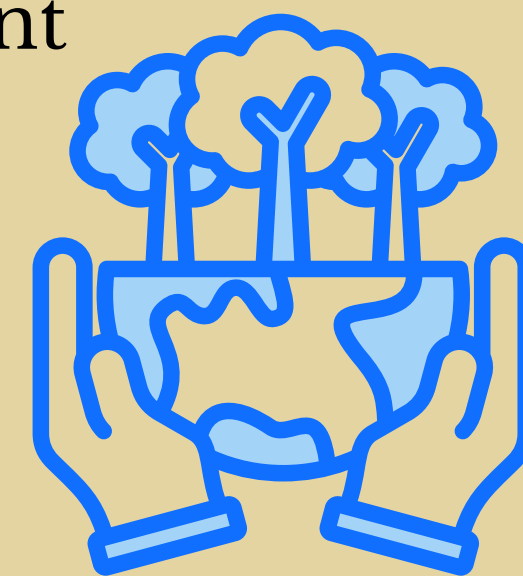


- Rising senior, pursuing **Environmental Science and Policy** at Florida State University
- Planning to attend law school with a focus on environmental justice
- Completing research for two undergraduate programs: Honors in the Major and the IDEA Grant



# Why Research?

- Looking deeper into the connection between humans and our environment
- Gaining essential skills in critical analysis, qualitative data collection, and longform writing
- Advocating for both people and planet through the project



**The natural environment is integral to Bay communities, shaping not only daily routines and local employment but also the cultural fabric of the region.**

**I want to examine this social-ecological relationship and determine how the community has changed post-decline.**

# MOTIVATIONS

- Community and environmental wellbeing are deeply interconnected.
- In Apalachicola Bay, this connection is reflected in the health and recovery of the oyster population.
- The region exemplifies a long-standing relationship between human and ecological systems.



# RESEARCH QUESTION

WHAT DOES THE FUTURE HOLD FOR FRANKLIN COUNTY'S PEOPLE NOW THAT THE BAY'S ENVIRONMENT (AND ITS OYSTERS) HAVE CHANGED?

## SUBQUESTIONS

HOW HAS THE COMMUNITY'S CULTURE OR WAY OF LIFE CHANGED SINCE THE OYSTER DECLINE?

HOW DO PEOPLE VIEW THE FISHING AND OYSTERING WORK NOW, COMPARED TO THE PAST?

IN WHAT WAYS HAS THE YOUNGER GENERATION BEEN AFFECTED BY THESE ENVIRONMENTAL AND ECONOMIC CHANGES?

HAVE SHIFTS IN INDUSTRY LED TO CHANGES IN JOB AVAILABILITY AND LOCAL CAREER OPPORTUNITIES?

# Methods

- Semi-structured interviews and online survey collection.
- Conversations remain completely anonymous, allowing stakeholders to express their opinions freely.
- Meeting with community leaders, scientists, the younger generation, and those with and without ties to traditional harvesting.
- Attempting to reach those who have not been regarded as stakeholders in the past.

## QUESTIONS BEING ASKED:

- Any cultural shifts?
- Any economic shifts?
- Population shifts?
- Job opportunity changes?

**THE OYSTER DECLINE'S FUTURE IMPACT MAY REVEAL A WIDER RANGE OF AFFECTED STAKEHOLDERS.**

# BEYOND THE BAY: EXPANDING STAKEHOLDER NETWORK

- Traditional stakeholder lists focus on direct impacts, but the decline also extended to schools, small businesses, families, and youth. My study focuses on system level interactions and outcomes to display:
  - Oyster decline impacts to indirect stakeholders (non-resource users)
  - Outcomes that impact the wider social, political, and economic future of the region

**This research will help reveal the full network of affected community members now and in the future, widening the stakeholder pool.**

To accurately describe the future impacts of the oyster collapse, I would love your input.

Scan me!



Morgan Krause

✉ in

Interview Sign Up - Franklin County Community Impact Study

Online Survey - Franklin County Community Impact Study

**MAK22F@FSU.EDU**

**Sign Up for an Interview**  
(In-person, Phone Call, or Zoom)

**OR**

**Fill Out an Online Survey**

**Thank you!**