

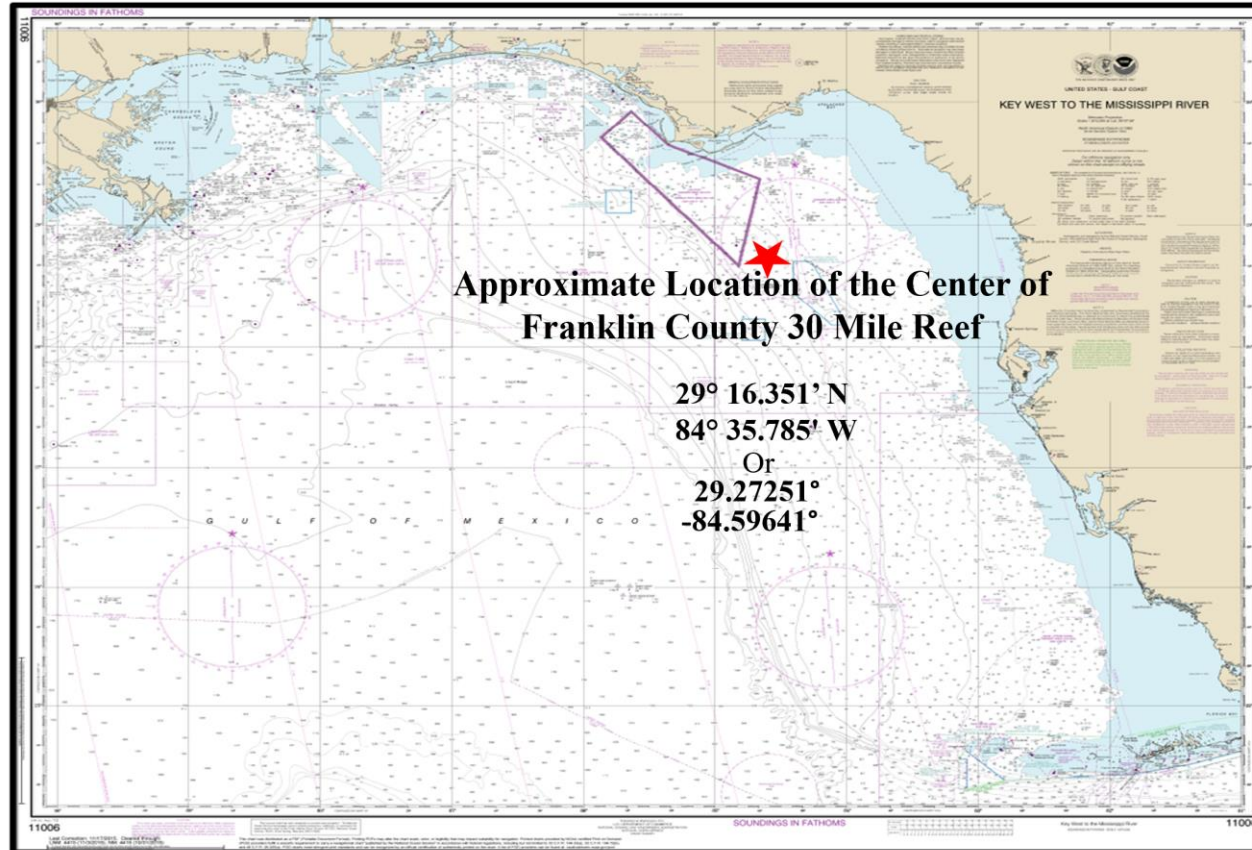
# *Franklin County 30-Mile Artificial Reef*



Grayson Shepard, Representing Apalachicola Reef Association

February 25, 2026

**Figure -1.1**



**NOAA Nautical Chart 11006**  
**Key West to the Mississippi River**

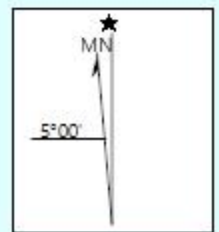
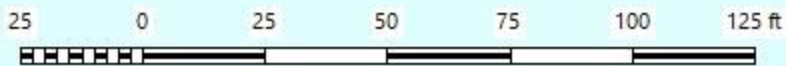
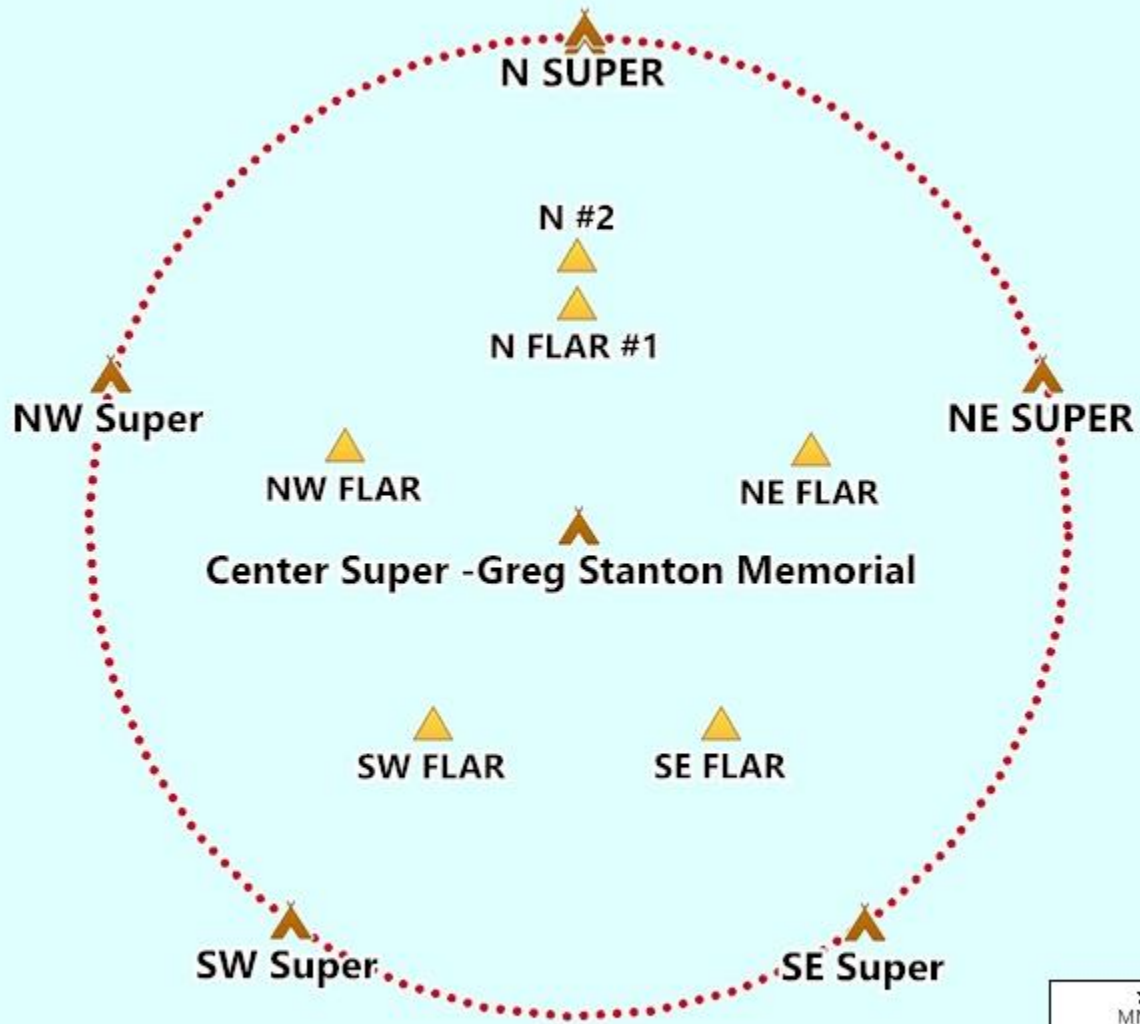
**(34th Ed, Aug 2013)**

Not to scale-Printed January 2026



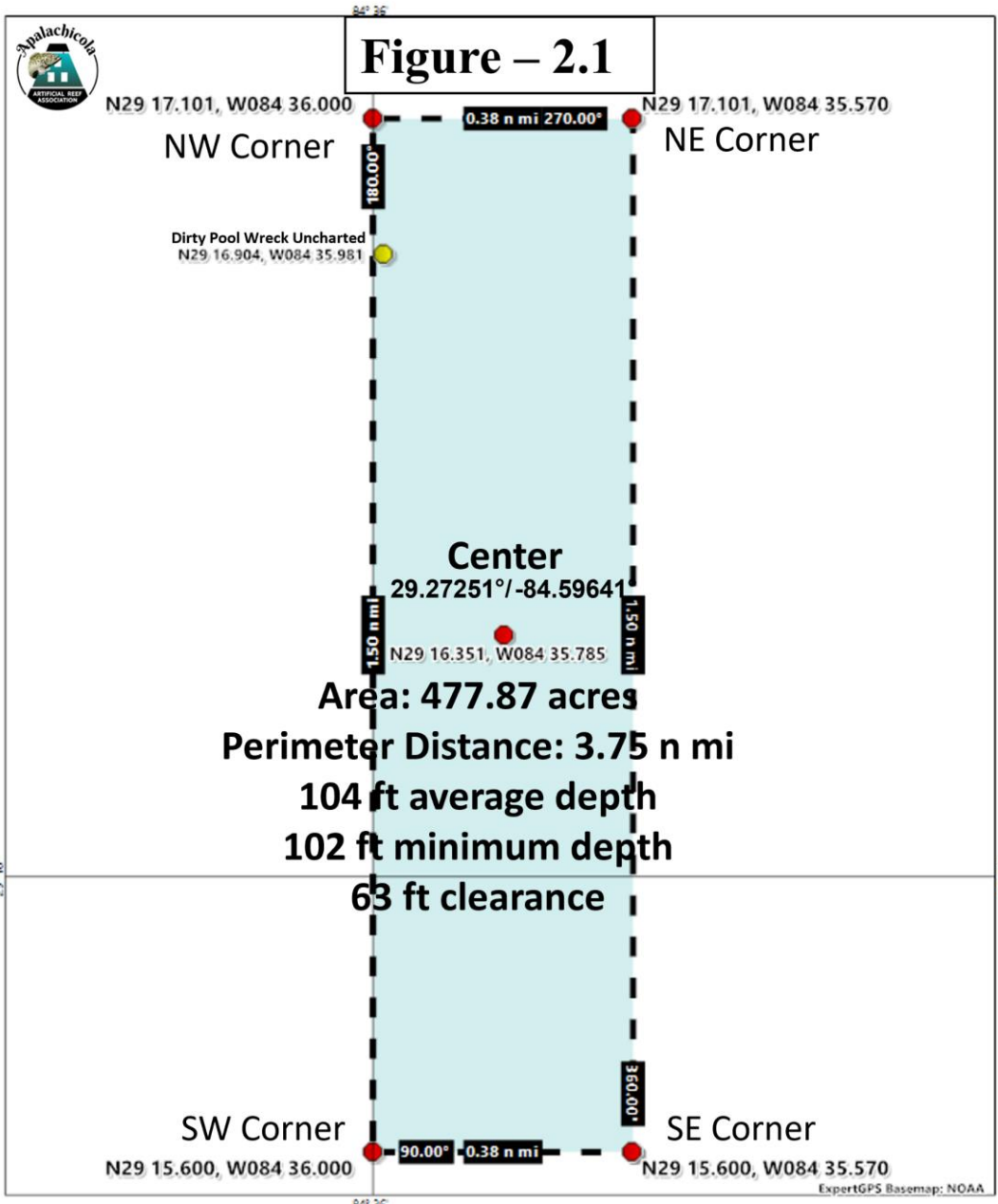




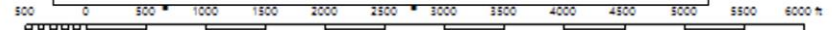




# Figure – 2.1



## Franklin County 30 Mile Reef – Detail Map



Scale: 1 : 18000

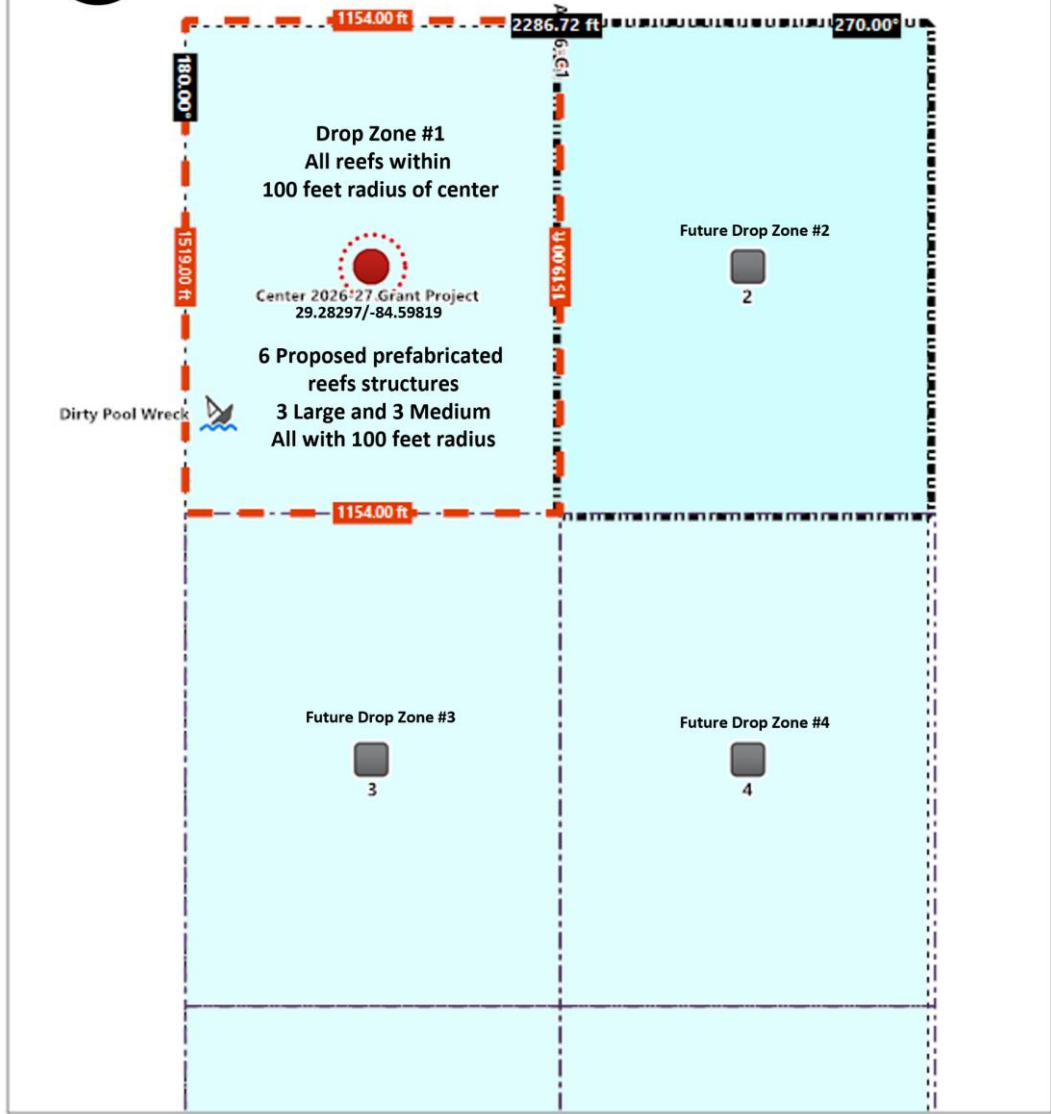
Printed January 2026



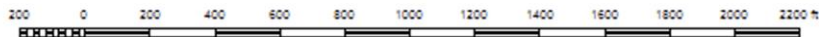


# Figure – 2.2

## Proposed 2026-27 FWC Reef Grant Location



### Franklin County 30 Mile Proposed FWC Grant Patch Reefs Map



Scale: 1 : 4800.

Printed January 2026





## **FWC 2025 Restoration**

(Photo Used for Discussion Only)